

Temperature Transmitter

TS 100 - Temperature Transmitter



CUSTOMER BENEFITS

- Customised matching of the temperature measuring range
- Standardized output signal for simple implementation
- Fast customization thanks to modular product design
- Compact and reliable design

Technical Specifications

TEMPERATURE MEASURING RANGE

Standard, (1)	0 ... 70°C
Lower end of range	-50°C
Upper end of range	150°C
Temperature span, (2)	> 30°C
Accuracy, (3)	
0 ... 70°C	$\leq \pm 1^\circ\text{C}$
-25 ... 85°C	$\leq \pm 1.5^\circ\text{C}$
-50 ... 150°C	$\leq \pm 2^\circ\text{C}$

- (1) Other temperature measuring ranges on request
 (2) Measuring range 15 ... 30°C must be contained
 (3) Probe, electronics, calibration

TEMPERATURE AND PRESSURE RANGE

Operating range	0 ... 850 bar
Operating temperature	-25 ... 85°C
Process temperature	-50 ... 150°C
Storage temperature	-25 ... 85°C

ELECTRICAL SPECIFICATIONS

	4 ... 20 mA	0 ... 20 mA	0 ... 5 V / 0 ... 10 V
Power supply	9 ... 33 VDC	15 ... 30 VDC	15 ... 30 VDC
Supply influence	< 0.1% FS	< 0.1% FS	< 0.1% FS
Current consumption			3 mA
Circuit diagram			
Load resistance			$R_L > 10\text{k}\Omega$
Load influence	< 0.1% FS	< 0.1% FS	< 0.1% FS
4 wires (passive)			

QUALIFICATIONS

	Description	Level	Typical interferences
EN 61000-4-2	Electrostatic discharge	4 kV contact / 8 kV air	
EN 61000-4-3	Irradiated RF	10V/m (0.08 ... 1 GHz)	Radio sets, wireless phones
EN 61000-4-4	Transients (burst)	2 kV	Motors, valves
EN 61000-4-6	Conducted RF	10 V (0.15 ... 80 MHz)	Frequency converters

PHYSICAL SPECIFICATIONS

Materials	
Probe	Stainless steel (316L / 1.4435)
Housing	Stainless steel (316L / 1.4404)
Seals	Viton
Cable	PUR, FEP, PE

Equipment

OVERVIEW

10.00.0091	Accessories overview
HART001	Cable Socket Connector DIN43650
HART058	Cable Socket Connector DIN 43650, Micro

Ordering information

	X	XXX	XXX	XX	XXX
Type					
TS 100					290
Temperature measuring range					
Measuring range specified by customer any range between -50...150°C delta ≥ 30°C, 15...30°C must be included					98
Probe					
G 1/2 M, Ø 3.5 x 25.5 mm (standard) (Fig. 3)					71
G 1/2 M, Ø 5 x 100 mm (Fig. 4)					96
G 1/2 M, Ø 5 x 200 mm (Fig. 5)					97
G 1/4 M, Ø 3.5 x 17 mm (Fig. 1)					95
G 1/4 M, Ø 5 x 32 mm (Fig. 2)					70
M 10, Ø 3.5 x 17 mm (Fig. 6)					98
Customized probes available					99
Electrical connection					
DIN-43650, demountable, IP 65, with metal threaded part (Fig. 10), (1)					01
M16 (Binder 723), 5-pins, IP 67 (Fig. 11), (1)					03
MIL C26482, 10-6, IP 40 (Fig. 13), (1)					06
PE cable, IP 67, black (Fig. 14), (2), (3)					13
PUR cable, IP 67, black (Fig. 14), (2), (4)					15
FEP cable, IP 67, black (Fig. 14), (2)					21
Customized connection available					99
Output signal					
4 ... 20 mA					05
0 ... 20 mA					00
0 ... 5 VDC					46
0 ... 10 VDC					47
4 wires (passive)					70
Costumized					99
Accuracy					
According to specifications					3
Temperature range					
-50 ... 100°C					1
-50 ... 150°C (with cooling fins)					2
Option 1					
Option 2					
Electronics packed in gel					D
Option 3					

(1) Cable socket connector not included

(2) Please specify the required cable length

(3) Suitable for drinking water (food approved)

(4) For operating temperature > 50°C, PE or FEP cable must be used

Technical drawings

Probe

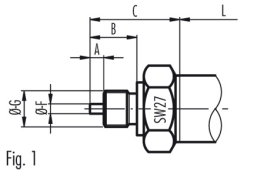


Fig. 1

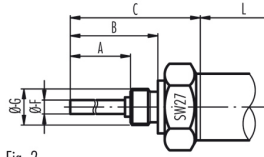


Fig. 2

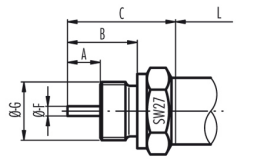


Fig. 3

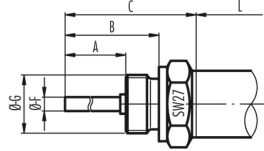


Fig. 4

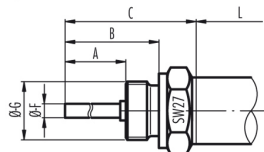


Fig. 5

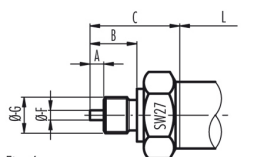
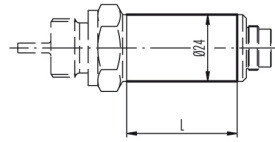


Fig. 6

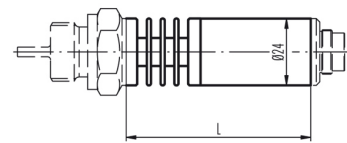
Dimensions

Version for media temperature up to 100°C



L = 45 mm

Version for media temperature up to 150°C



L = 72 mm

Electrical connection

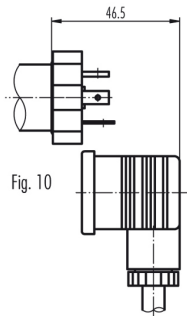


Fig. 10

Pin	2-Wire	3-Wire	4-Wire
1	+Vin	+Vin	+Vin
2	Tout	Tout	+Tout
3		GND	GND
			-Tout

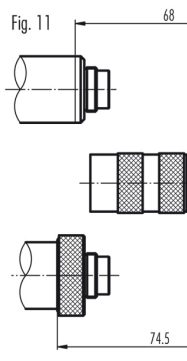
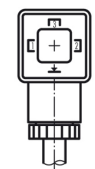
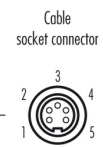


Fig. 11



Cable socket connector

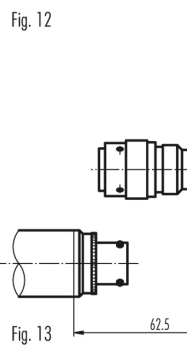


Fig. 12

Pin	2-Wire	3-Wire	4-Wire
1		+Vin	+Vin
2	Tout	Tout	+Tout
3	+Vin	+Vin	-Tout
4		GND	GND



Cable socket connector

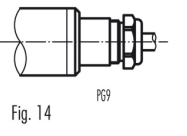


Fig. 13

Pin	2-Wire	3-Wire	4-Wire
A	+Vin	+Vin	+Vin
B		GND	GND
C			+Tout
D	Tout	Tout	-Tout

Fig. 14

Colour	2-Wire	3-Wire	4-Wire
white	+Vin	+Vin	+Vin
green	Tout	Tout	-Tout
yellow		GND	GND
brown			+Tout

Probe	A	B	C	Ø-F (Probe)	Ø-G (Thread)
Fig. 1	5	17	32.5	3.5	G 1/4 M
Fig. 2	22	32	47.5	5	G 1/4 M
Fig. 3	12	25.5	39.5	3.5	G 1/2 M
Fig. 4	88	100	113.5	5	G 1/2 M
Fig. 5	188	200	213.5	5	G 1/2 M
Fig. 6	5	17	32.5	3.5	M 10

Specifications may change without notice.

ST5 Headquarters, Switzerland:
ST5 Sensor Technik, Sirmach AG
Rüthofstrasse 8 | 8370 Sirmach | Switzerland
sales@st5sensors.com | www.st5sensors.com

ST5 China:
ST5 Sensor Technology (Shanghai) Co. Ltd
Room 2603-2606 | North Building, Fortune | 108 Square
Lane 1839 | Qixin Road | Minhang District | Shanghai | China
sales@st5sensors.com | www.st5sensors.com.cn

ST5 France:
ST5 France
844 Route de la Caille | 74350 Allonzière la Caille | France
info-fr@st5sensors.com | www.st5sensors.fr

ST5 Germany:
ST5 Sensoren Transmitter Systeme GmbH
Poststrasse 7 | 71063 Sindelfingen | Germany
info-de@st5sensors.com | www.st5sensors.de

ST5 Great Britain:
ST5 Great Britain Ltd.
Box 3942 | Warwick | CV34 9AE | United Kingdom
contact@st5sensors.com | www.st5sensors.co.uk

ST5 Italy:
ST5 Italia s.r.l.
Via Lambro 36 | 20090 Opera (MI) | Italy
info-italia@st5sensors.com | www.st5sensors.it